



Take Flatness to a New Level!

*Stretch Leveling Systems for Retrofit & New
Light & Heavy-Gauge CTL Lines*



Leveltek
INTERNATIONAL LLC

STRETCHING METALS
WITH NEW TECHNOLOGY

Your Single Source for Stretch Leveling Machines & Complete Cut-to-Length Lines

React. Retrofit. Reap.

Leveltek Stretch Leveling can help you provide cut sheets that satisfy fabricators' increased demand for perfectly flat, **memory-free sheets** required by laser and plasma cutting.

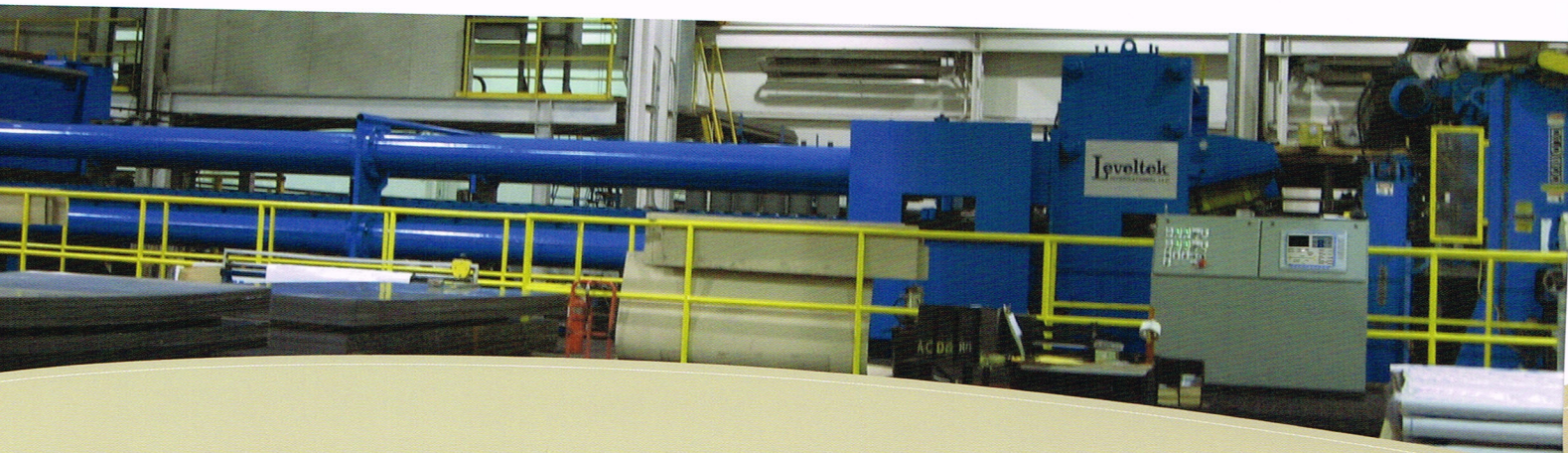
On a **new or existing cut-to-length line**, you'll be able to handle light and heavy-gauge product, including HSLA steel grades, that require stretching to near-perfect, memory-free flatness.

Our proprietary, non-marking grippers enable us to excel at long sheet lengths. Besides leaving no marks on the metal, a Leveltek Stretch Leveling Machine is superior to competing equipment because it offers these features:

- > Higher reliability; more up-time with few moving parts
- > Versatility and speed with documented productivity improvements
- > Stretches light and heavy-gauge products by a unique "mechanical advantage" design
- > All component parts commercially available
- > Fast installation; modular design
- > Built on a flat concrete floor; no special foundations required
- > Retrofits cost far less than a new line

Conceive. Construct. Complete.

If you're building a new line, Leveltek offers turnkey solutions that include our proprietary stretch leveling system. Besides providing stretch leveling machines, our team is able to design, build and install your complete line.



The Peak of Stretch Leveling Superiority

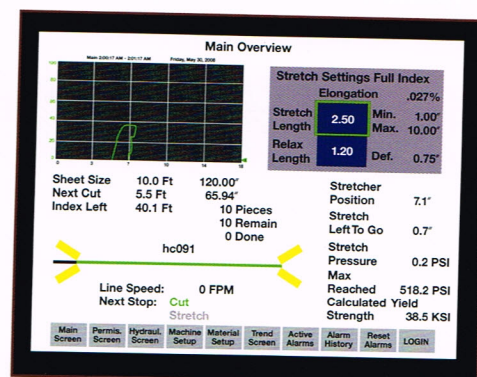
Perceive. Perform. Profit.

The Leveltek Stretch Leveler fits easily into existing or new cut-to-length lines. Our unique design concepts, stretch leveling technology and turnkey solutions give you a big advantage over competitors.

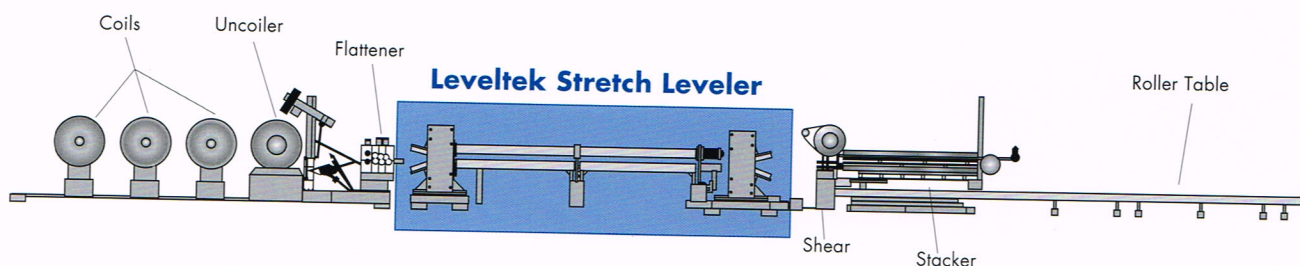
With few moving parts, leveling occurs reliably and consistently, helping you to meet or exceed your productivity goals.

Since 1993, we've been installing our equipment in metals production facilities worldwide. Clearly, our superior technology fills a vital market need.

To make sure you're getting the best value in stretch leveling systems, depend on **Leveltek International!**

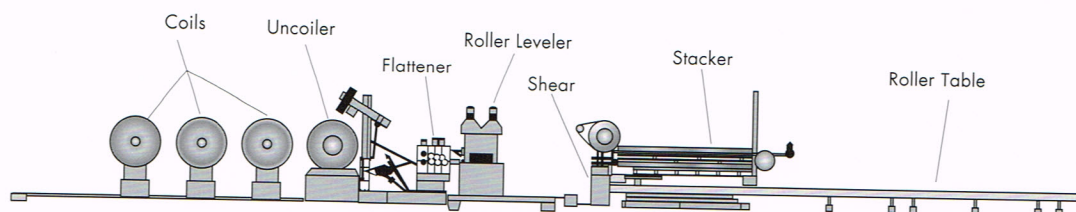


New Cut-to-Length Line



Retrofit Cut-to-Length Line

Before



After

